

Hartley Homestead Boutique Bed and Breakfast

A few minutes stroll from the historic gold mining township of Clyde in Central Otago and the Otago Central Rail Trail sits a grand 1900s mud brick homestead surrounded by sweeping lawns and mature fruit trees.

Contact Information:

Phone: +64 3 449 3307

Mobile: 021 02282449

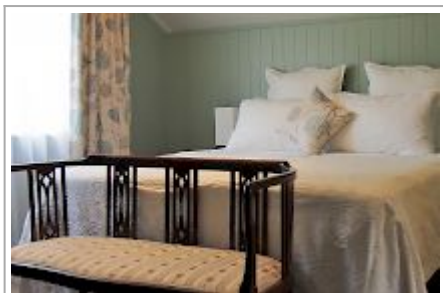
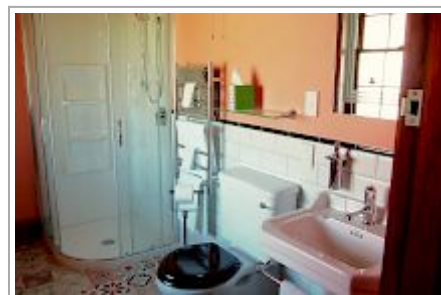
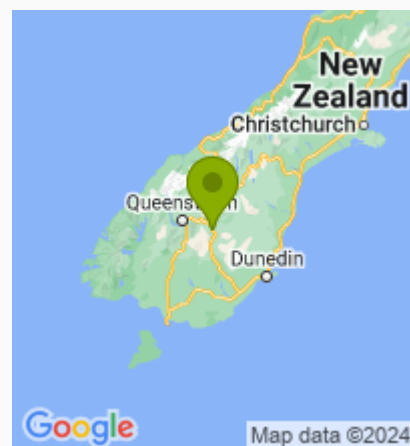
Address: 23 Pyke Street, Clyde,
Central Otago

Hosts: Euan Mackenzie

Location: One hour from
Queenstown and Wanaka, two and
half hours from Dunedin, 15 minute

Directions: One hour from
Queenstown airport on State
Highway 8.

GPS: -45.1919658, 169.3185055



Hartley Homestead Boutique Bed and Breakfast Map

